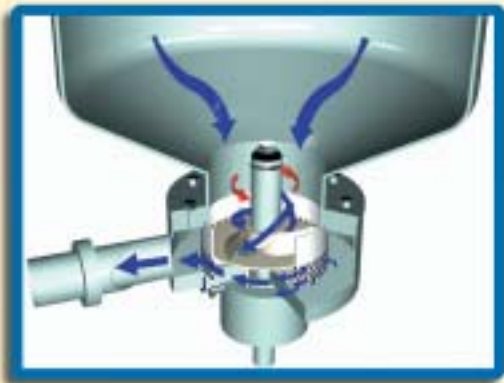


Tetra Almix® Spark 10

Powder dissolving module



Application

Module for dissolving of powders and salts used in the carbonated soft drinks industry.

The module can also be used for mixing liquid concentrates and water.

The Tetra Almix Spark 10 version is specially designed to dissolve powders like Aspartame and Maltodextrines in a very quick and efficient way.

Working principle

The main components in Tetra Almix Spark 10 are a 200 litres mixing vessel, and a mixing unit, located in the bottom of the mixing vessel. As the mixing vessel is filled with liquid, the air incorporation is

minimised and there is no risk of clogging of powder. The mixing unit, consisting of a rotor and a perforated stator, produces a product free from lumps and ensures optimal processing.

Dry powders are manually added into the mixing vessel, filled with a preset amount of treated water. The water/powder mixture is pumped in a circulation loop over the pre-blend tank and mixed to a homogeneous liquid. When the desired composition is reached the batch is ready for dispatch by the circulation pump.

Tetra Almix Spark 10 is manually controlled during production and CIP from the operator control panel.

Tetra Almix Spark 10 – powder dissolving module

Technical Data

Tetra Almix Spark 10 is a basic module, pre-assembled and tested with water in the workshop prior to delivery.

All parts in contact with the product are made of stainless steel AISI 316. Other parts are made of stainless steel AISI 304.

Main components

Mixing tank, 200 l

Set of valves, pipes and fittings

Control panel with push-buttons, main switch and emergency stop, motor starters, solenoid valves, alarm

Consumption data

Power consumption, kW	18,5
Instrumental air 600 kPa, N l/h	100
Shaft seal water for mixing unit, l/h	10

Capacity

Batches up to 800 l.

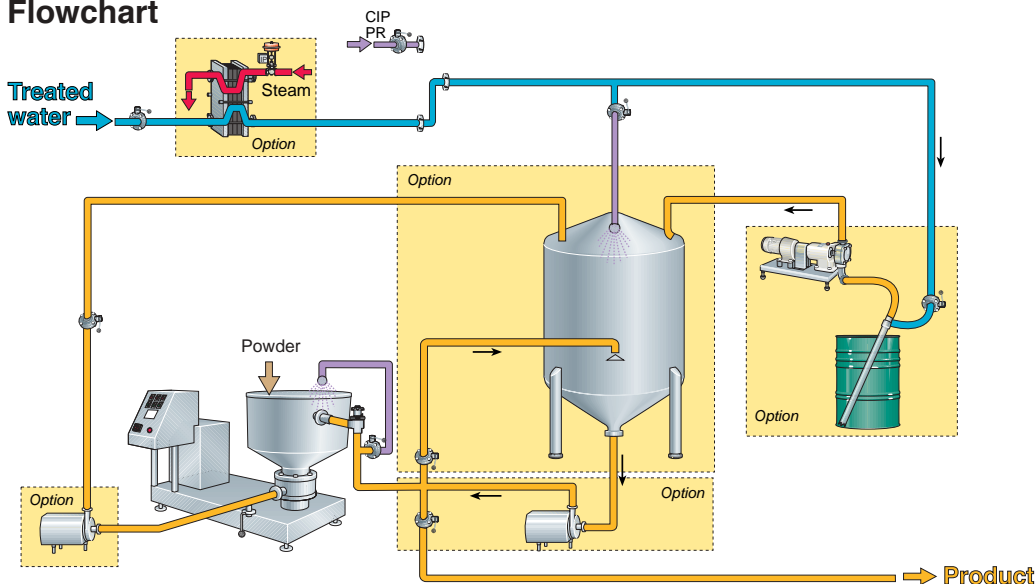
Optional Equipment

- Drum emptying system for liquid concentrates
- Outlet pump
- Pre-heating of water, incl. PHE and steam control system
- Inlet pump
- Pre-blend tank, 800 l
- CIP cover and spray ball
- Control panel
- Spare part kit for mixing unit, 5 000 h

Shipping Data

Net weight: approx. kg	300
Gross weight: approx. kg	350
Volume: approx. m ³	3

Flowchart



Dimensions, (for installation)

